



Illinois Watercolor Society

36th National Exhibition

May 2 - 29, 2020



Dongfeng Li , *Touch of Light Snow on the Tibetan Plateau*

The Illinois Watercolor Society was founded in 1981 by a group of ten artists living in the Chicagoland area and lead by Charles Strissel as president. The membership grew quickly and IWS held its first exhibition at the Redfield Estate at The Grove in Glenview, IL in 1984. Throughout the next two decades, IWS continued to hold annual exhibitions and membership grew to include over 100 artists. In 1999, Charles Strissel retired as president and Dana Nash took over. During this time the annual exhibition moved to other locations such as the Schaumburg Prairie Center for the Arts and the National Arts Foundation in Skokie, IL. A separate, annual members' show was started and originally held at the High Risk gallery in Chicago. IWS also began sponsoring demonstrations from nationally recognized artists such as Nita Engle and Zoltan Szabo. In 2007, Tony Armendariz became the IWS Executive Director and with Carole Hennessy, continued sponsoring the National Show, the Members' Invitational and members meetings featuring art demonstrations. IWS also held a Signature Show in 2013 and Small Waters shows in 2012 and 2019. In 2015, a Board of Directors was established and in 2017, Benita Brewer became the IWS Director. Today, with over 180 members, IWS continues to sponsor two shows each year and has partnered with the Oak Brook Public library to hold the bi-monthly meetings which feature artist demonstrations.

The mission of the Illinois Watercolor Society is to advance the education and caliber of watercolor painting throughout Illinois. We encourage the practice and appreciation of water-based media at all skill levels. Benefits to membership include a newsletter featuring members' events and accomplishments, a website for members to use as a learning and promotional resource, exhibitions and artistic demonstrations. Artists of all skill levels are encouraged to join IWS.

The IWS National Show has been held at the Next Picture Show Gallery since 2009 and we, at IWS, want to thank Mike Glenn, NPS Gallery Director, the volunteers and sponsors for their continuing support of IWS.

2020 IWS Board members

- Benita Brewer - Director, Member Show Chair
- Ken Call - National Show Chair
- Carole Hennessy - Special Projects Chair
- Tony Armendariz - Treasurer
- Dan Danielson - Members Meeting Chair
- Gerald Lewis - Membership Chair
- Sylvia Arrufo - Newsletter Editor
- Judy Dixon - Historian

All Rights reserved. All works contained herein have been reproduced with the full knowledge and consent of their creators, who retain copyright to those works. No portion of this book may be reproduced in any form without written permission of the copyright owners.

Juror's Statement:

To all IWS Members;

Thank you for selecting me to be your judge for the IWS National show 2020. It is truly an honor. Thank you for your continued support of IWS. And thank you for making art and supporting your art community wherever you call home.

These are unique times we are living in. I would have wanted to give this talk in person. But it just wasn't to be this year... So, we are going to make the most out of this situation and I am 100% convinced we will come out of this pandemic stronger people, better artist and more importantly, more connected and loving human beings.

This year's art was amazing. Congratulations to everyone who submitted art. And congratulations to all the artists that made the final selection to represent the National IWS Show for 2020. Each piece was so inspiring to look at. I enjoyed reviewing each piece several times and found myself actually dreaming of the art late at night. Take the time to review each piece submitted. Allow each watercolor to connect with you, to tell you their story and transport you to another time or another place. Art is really good at that if you let it. If there is a piece that pulls on your heartstrings, this is the art telling you it needs you in its life. Make sure you buy it before someone else does.

For Saturday's Open Critique session, we'll go over 10 design guidelines I like to follow while judging art. Just a few of these are; Boundaries - Knowing where things leave and enter a painting are very important; Movement - creating a way to move through the painting; And Rhythm and Harmony - both of these design elements create a flow that helps connect people to your scenes. We'll cover seven more on Saturday's talk. We'll the review each of selected paintings and I'll give a short discussion on each painting as if we are all walking and talking about the art at the Gallery. At the end, we'll award the winning entries for IWS 2020.

Again, thank you for giving me this tremendous honor and responsibility in jurying this National Show.

Steve Puttrich,
IWS National Show Juror, 2020

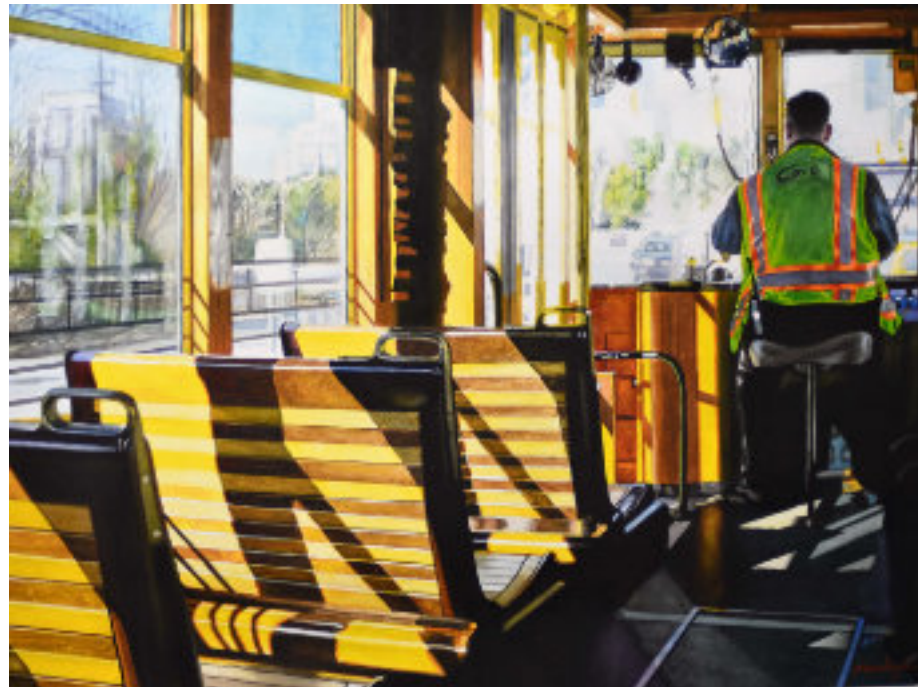
Dongfeng Li
*Touch of Light Snow
 on the Tibetan Plateau*
 40x30
 Best of Show



Chris Krupinski
Not So Black and White
 30x22
 Award of Excellence II



Lynda Pittman
Rose of Sharon
 29x22
 Award of Excellence III



Allan Butt
The Trolley Driver
 22x30
 Award of Excellence I

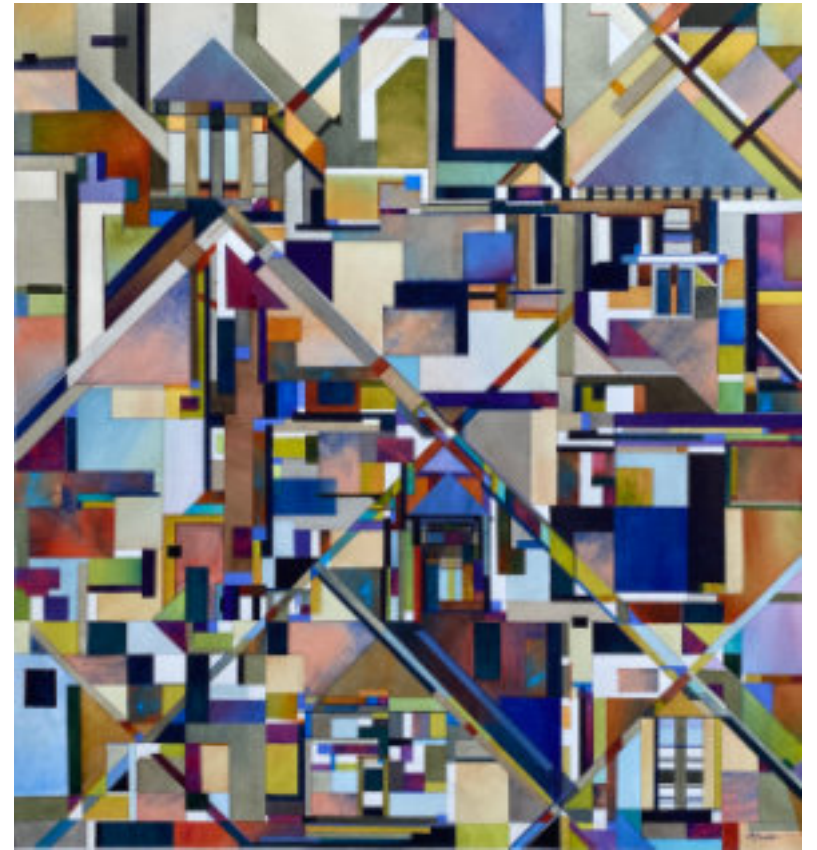
Christine Alfery, IWS
Flowers From My Garden
 12x12
 Schultz Creative Spirit Award



Kelly Eddington, IWS
Too Many Choices
 24x18
 Outstanding Figurative



Lisa Arnold Franklin
House Colors
 22x22
 Outstanding Abstract/
 Nonrepresentational



Peter Jablokow, IWS
Bridges At Sunset
 15x22
 Outstanding Landscape



Diane Shabino, IWS
Sweet Autumn Clematis
 14x21
 Charles Strissel
 Memorial Award



Sylvia Aruffo, IWS
Monumental Morning
 22x30



Stephen Edwards
The Day Is Done
 27x36



Jennifer Bateman
Smokestacks On The Illinois River
 12x16



Chantel Cadenat
The Grand Prismatic Spring
 24x30



Denny Bond
Fastened
 36x25
 Honorable Mention



Ginger Chen
Wait & Wet
20x14



Dan Danielson, IWS
Say AAAH!
27x22
Honorable Mention



Ratindra Das
Hickey
19x28



Jackie Dorsey
Blue Heat
30x37

Marnie Becker
Young Flute Player
19x24



Lok Kerk Hwang
Wheels No. 11
11x15

Z.L. Feng
Chyna
24x18



Aneita Gates, IWS
Looking to the Future
20x26



Max Good
Waiting in the Wings
12x16



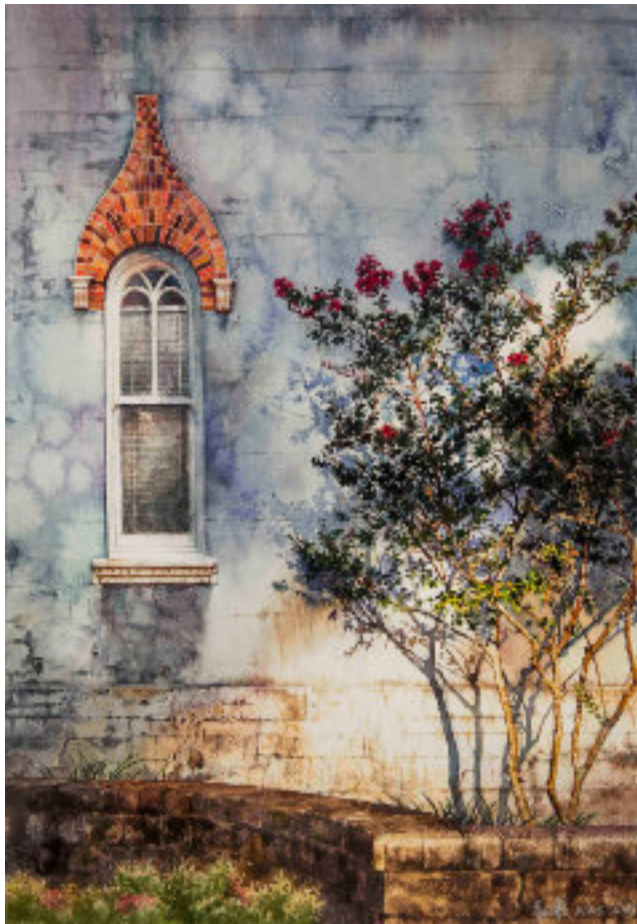
April Rimpo, IWS
The Perfect Ride
26x19



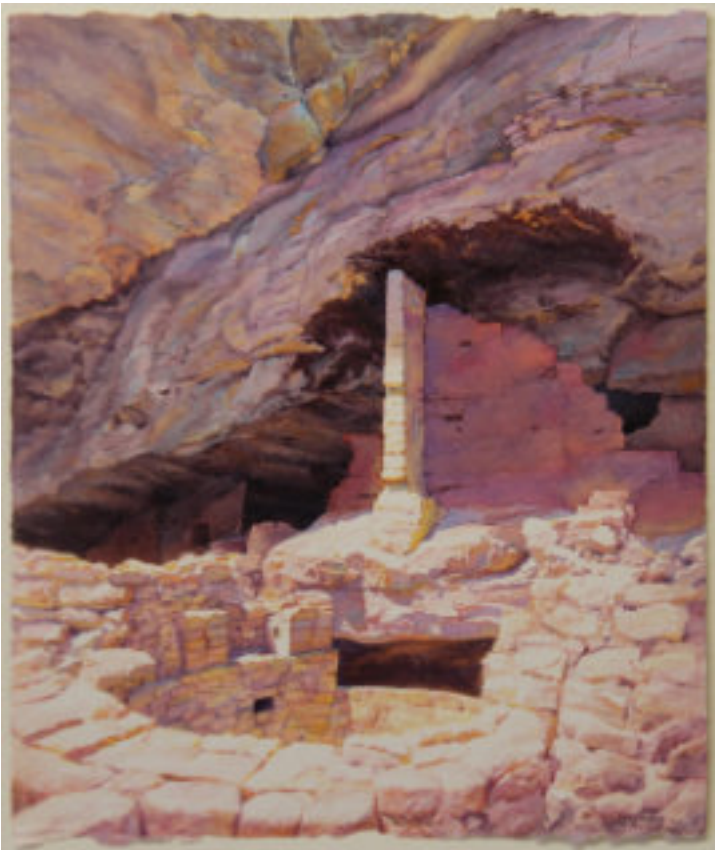
Cheng Fen Yeh
Contractor
18x17



Robert Krajecki, IWS
On a Winter's Day
13x19



Xi Guo
The Back Yard
 19x13



Larry Hughes
Kiva, Oak Tree House
 14x12



Thomas Herzberg, IWS
Forget Me Not
 26x20
 Honorable Mention



Janine Helton
A Little Bit Shy
 15x11



Miguel Malagon
Sisters II
 12x9



Rebecca Krutsinger
Nature's Beauty
 24x18

Megan Rimpke
Blushing Hydrangea
 18x24
 Honorable Mention



Karen Romani
Lunchtime
 12x9



Shirley Kleppe
Army Dock
 22x30



Rebecca Latham
Bounty
 10x8



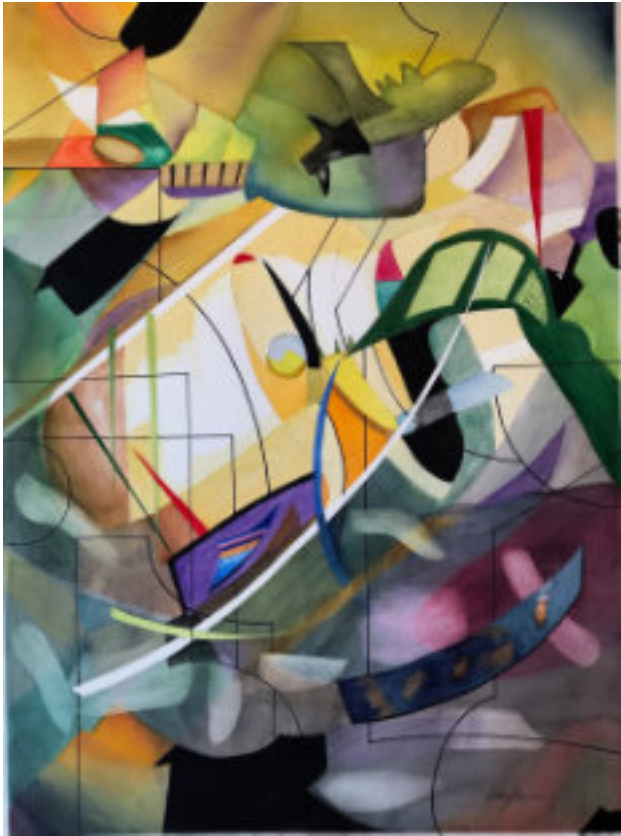
Ann Pember, IWS
Haughty Hollyhock
 22x28



Susan Kieth, IWS
Life In Full Circle
 28x33



Alexis Lavine
Rules of the Game
 25x25



Larry Bond
UFO
 36x27



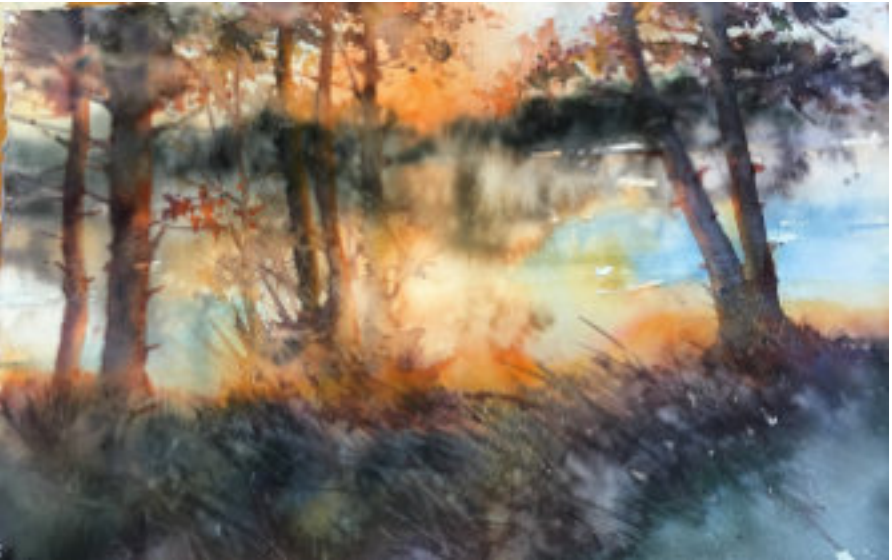
Yueqi Zhang, IWS
Homecoming
 19x25



Patti Linden Seifrid, IWS
At The End Of The Day
 22x28



Debbie Megginson
The Geometry of Pears
 14x20

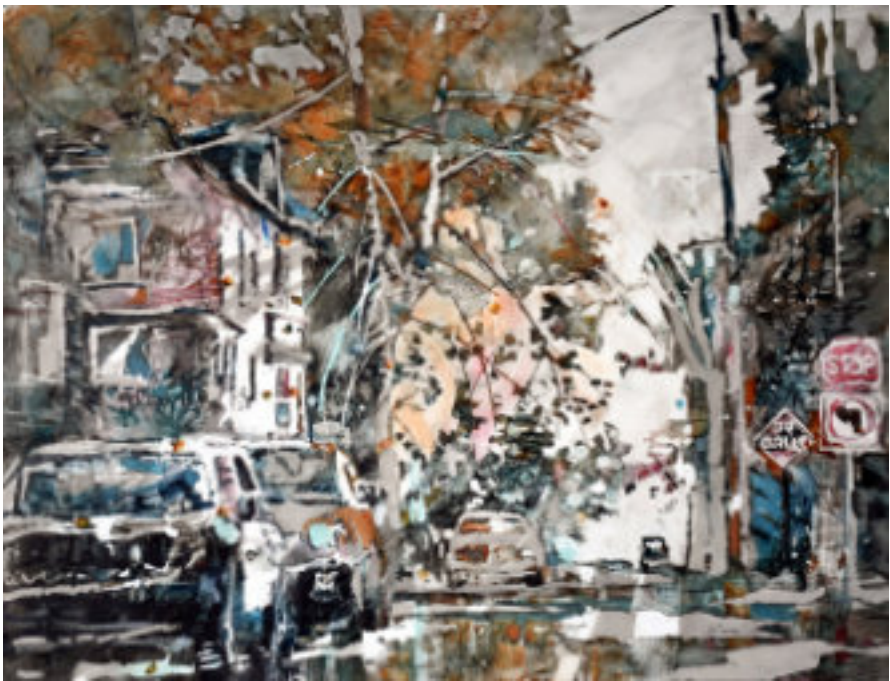


Carol Fink Sackschewsky
Sunset On The Lake
 15x25

Glenda McCune
To The Market
32x26



Eileen Sudzina
On The Street Where You Live
20x26



Arena Shawn, IWS
Summer's Glory
20x14



Jeannine Swartz
Daddy
21x16
Honorable Mention



Carole Wilson, IWS
Red Rooster Cafe
16x11

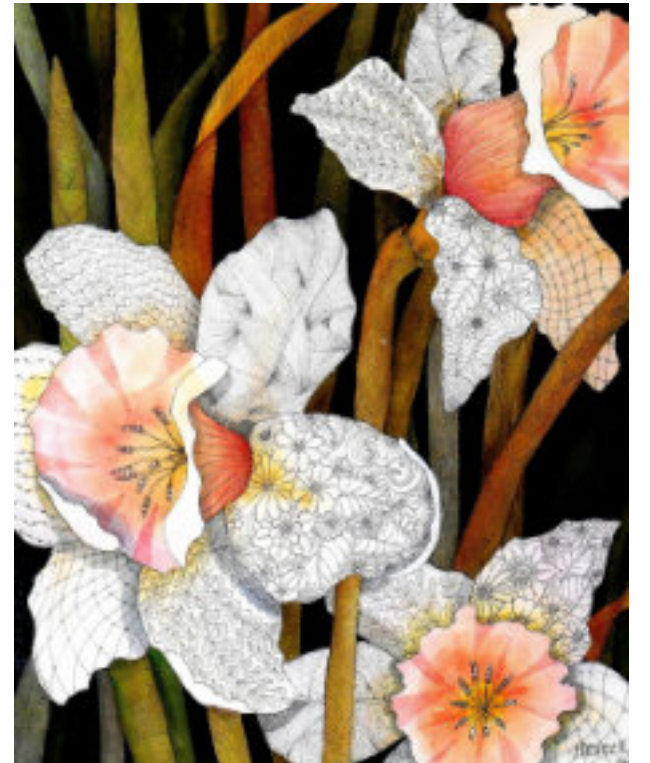


Cassandra Swierenga, IWS
Pondering The Dutch Mountains
20x11

Elaine Nunnally, IWS
Cows on the Camino
15x22



Patricia Mroczka, IWS
Delicate Daffies
24x20



Michael Payette
Taking Care Of Business
15x22



Dawn Schwartz
Red Veined Cabbage
21x28



Joel Popadics
Ground Mist Shelburne Farms
22x28

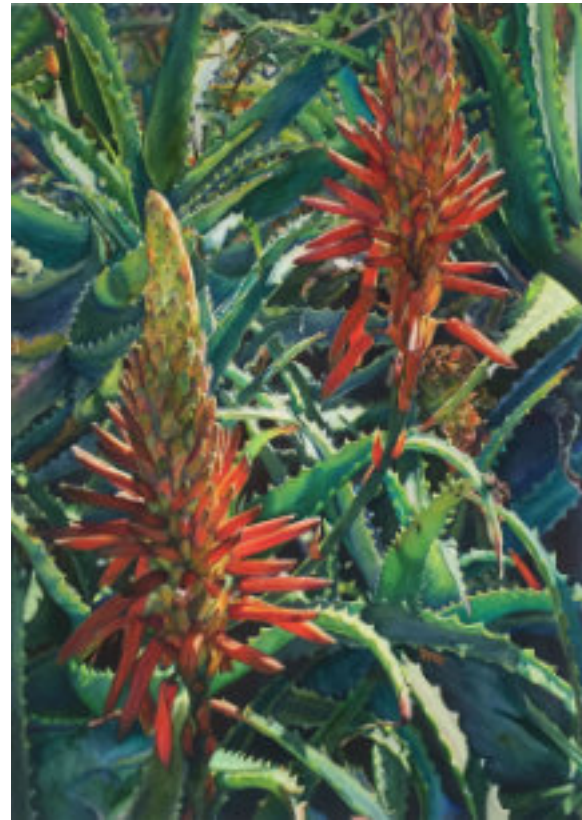
22 IWS, 2020

Lynn Pratt
Bakery Fresh
22x28



IWS, 2020 23

Prerana Kulkarni
Hedgehog Aloe Blooms
 28x20
 Honorable Mention



George Schoonover, IWS
Beached Pilate
 19x21



Eileen Mueller Neill, IWS
Cactus Garden
 21x28



Mei Shu
Beyond The Color
 21x14



Patrick Sheehan, IWS
The Usual Suspects
 16x20

Lawrence Raffanti
Kerrie and Allie Kayaking in Mykonos
 20x28
 Honorable Mention

